

JBG SMITH
AT
NATIONAL
LANDING



THE GATEWAYS
1225 S. CLARK STREET

Two Retail Opportunities in National Landing

Up to 5,000 SF & 1,350 SF

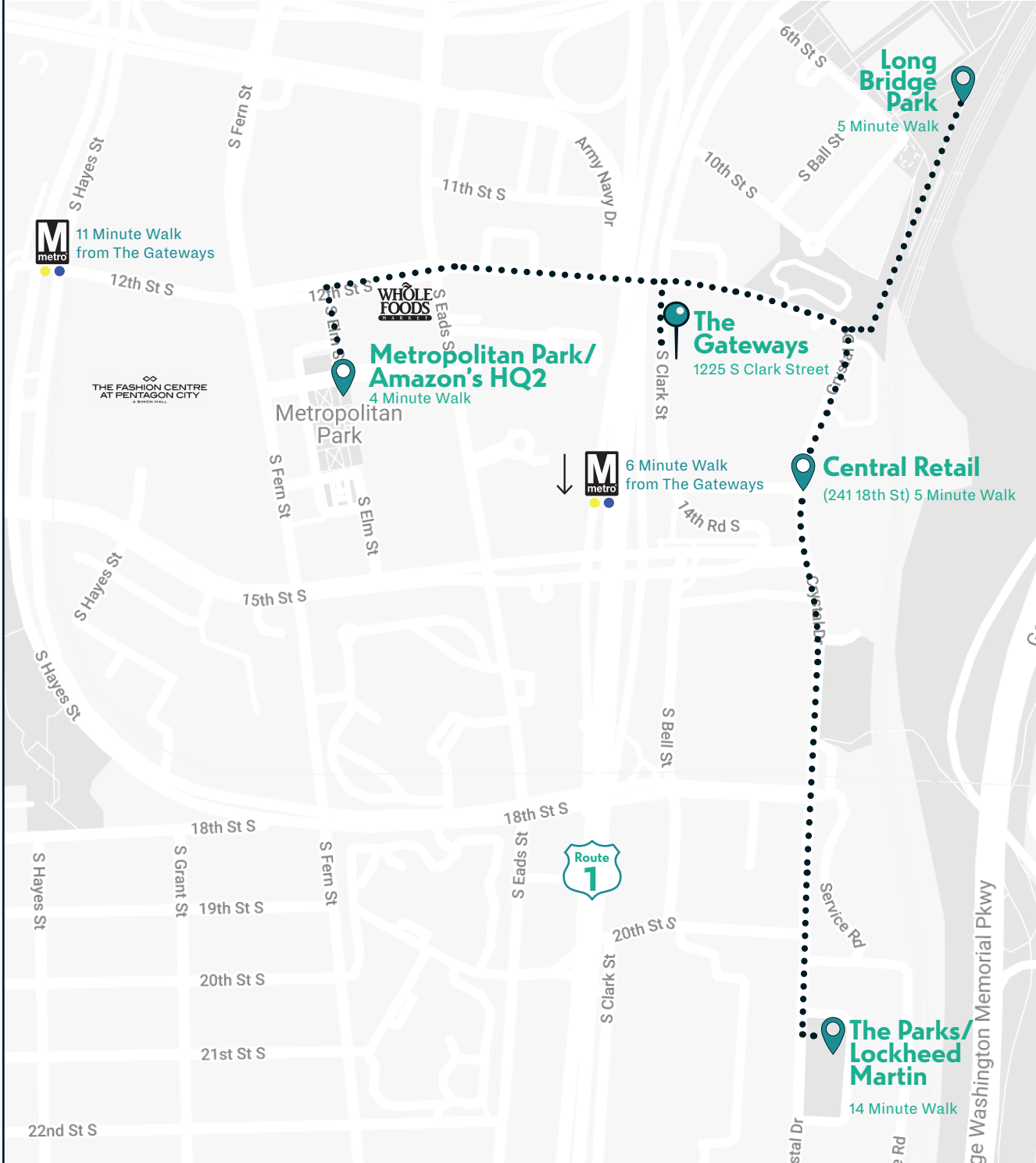
Take advantage of these **unique retail opportunities** in National Landing. With up to 5,000 square feet (Opportunity #1) and 1,350 square feet (Opportunity #2) of **second-generation space**, these street level, **cost-effective** opportunities make it possible to incorporate a commissary/ghost kitchen with the traditionally appealing restaurant elements of a great window line and outdoor dining.

At the base of a **95% leased**, 15-story office building, you'll share a home with tenants that include: **Boeing, Nearmap, and PBS.**

1225 S. Clark Street is within two blocks of Amazon's HQ2 and is just steps from the Crystal City Metro, the VRE station, Long Bridge Park, and Whole Foods.

With the addition of **over 100,000 SF of entertainment-driven retail** located within a 5-minute walk, don't miss being a part of this vibrant 18-hour day neighborhood.





Walk Time

Metropolitan Park/ Amazon's HQ2

2.1 M SF of Office | 4 Minute Walk

Central Retail

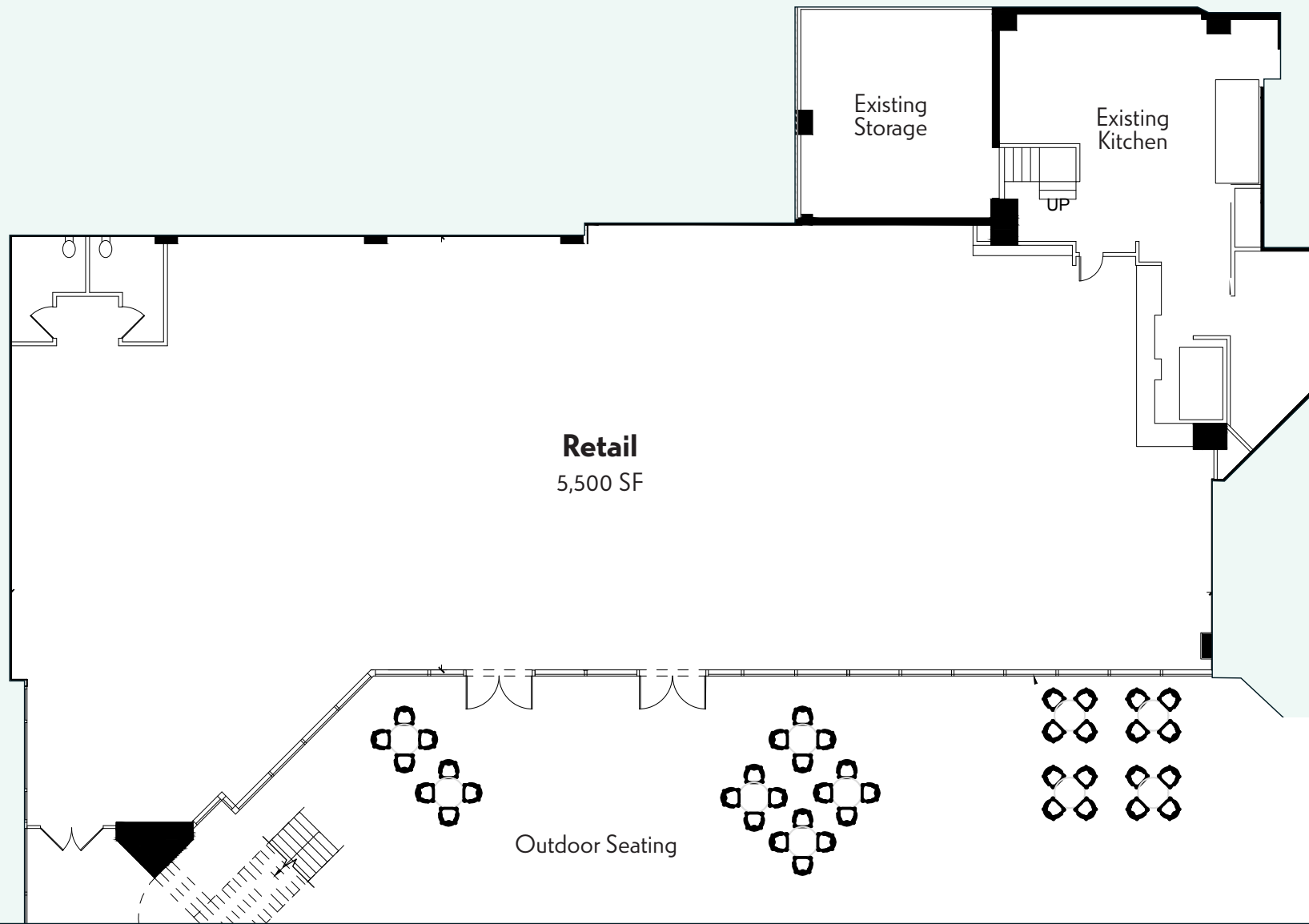
100,000 SF of New Retail | 5 Minute Walk

Long Bridge Park

5 Minute Walk

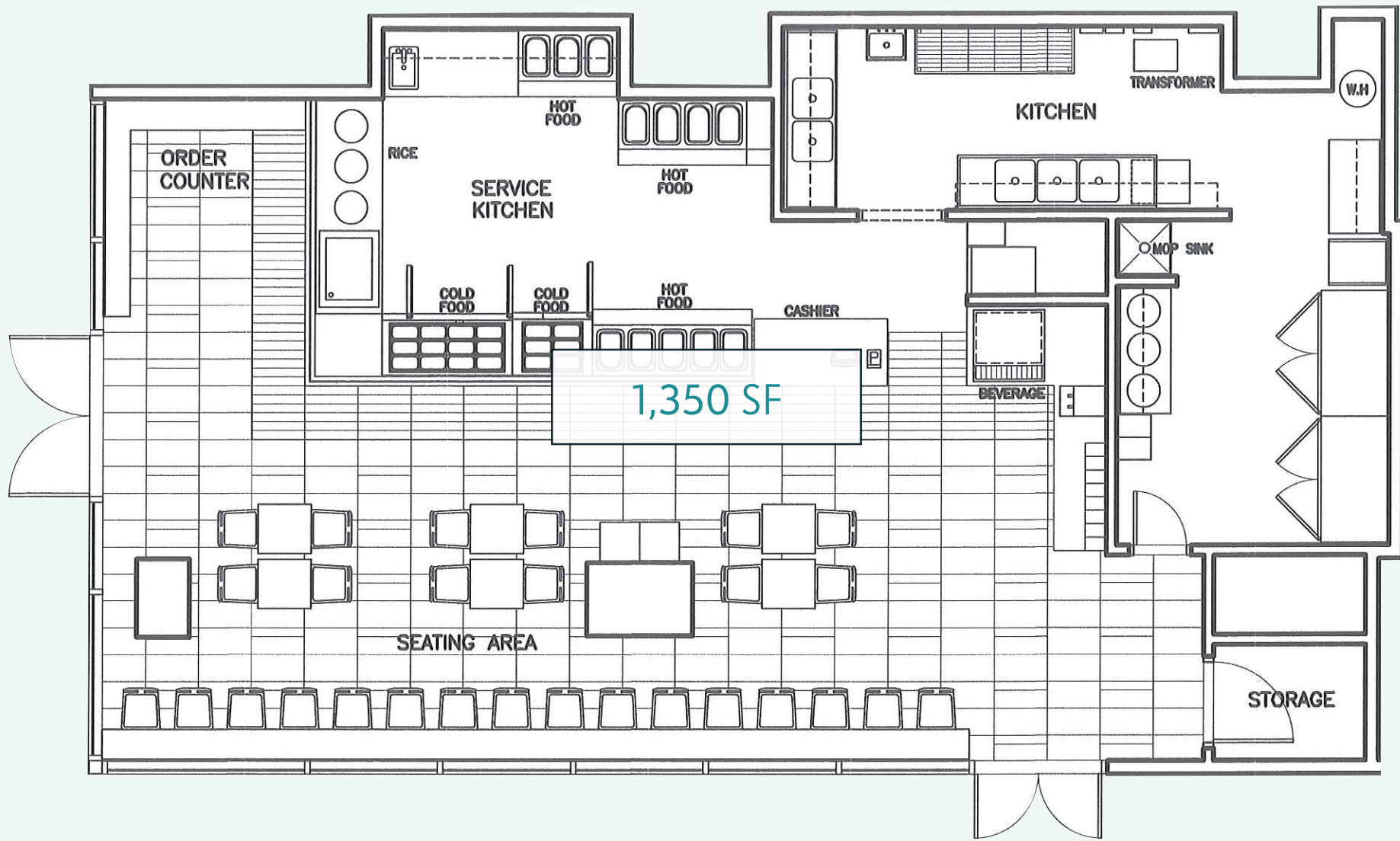
The Parks Buildings/ Lockheed Martin

2.5 M SF of Office | 14 Minute Walk



Opportunity #1





Opportunity #2



The Gateways

1225 S. Clark Street

For More Information:

Jackie Sammarco
703.851.5034 | jsammarco@jbgsmith.com

Sara Swift
240.333.3691 | sswift@jbgsmith.com